

ABOUT SEATTLE STREETCAR

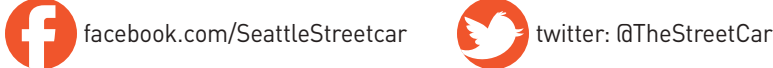
The City of Seattle is building a modern streetcar system that will provide new mobility options, support economic growth, and strengthen connections in the urban core.

STREETCAR FEATURES

- Each streetcar can carry up to 140 passengers
Streetcars are frequent and arrive as often as every 10 minutes
Level boarding makes streetcar travel accessible for all

CONTACT US

- For questions or comments about operations, contact King County Metro Customer Service at 206-296-0100
Visit seattlestreetcar.org
Sign up to receive project updates at seattlestreetcar.org/contact



KING COUNTY METRO RAPIDRIDE

RapidRide buses come so often, you don't need a timetable.

- Service at least every 10 minutes during the busiest morning and evening travel hours
15 minute service during off-peak periods
Scheduled service for late night/early mornings
Full service 7 days a week

metro.kingcounty.gov/travel-options/bus/rapidride
206-553-3000



KING COUNTY METRO

King County (KC) Metro provides 400,000 daily rides and takes 175,000 cars off the road each weekday, carrying nearly half of Downtown Seattle's workforce to and from their jobs.

KC Metro serves destinations throughout King County including Seattle, SeaTac, Bellevue, Redmond, Shoreline, and Renton.

Demand for transit is at an all-time high, and recent studies project 30% more people by 2040. As the Central Puget Sound area continues to grow, public transportation will play an increasingly important role in reducing congestion, protecting our environment, and getting more people where they need to go.

metro.kingcounty.gov
206-553-3000

VanPool Program

KC Metro has the largest publicly owned vanpool program in the nation. With close to 1,400 customer-operated vans on the road, this service gives commuters convenient transportation to their workplaces.

RideshareOnline.com
206-625-4500

Access Program

For people with disabilities who can't use regular buses, KC Metro's Access program provides door-to-door van service.
206-553-3000

SOUND TRANSIT ST EXPRESS

Sound Transit (ST) Express bus routes provide fast service between major cities and job centers, and allow convenient transfers to the streetcar, train service, and local buses.

- Bellevue
Everett
Federal Way
Gig Harbor
Issaquah
Lakewood
Lynnwood
Olympia
Puyallup
Redmond
Tacoma
Woodinville

soundtransit.org/Rider-Guide/ST-Express-bus
888-889-6368

COMMUNITY TRANSIT BUS SERVICE

Many Snohomish County communities are connected to Downtown Seattle through the Community Transit bus service including:

- Arlington
Bothell
Edmonds
Everett
Lynnwood
Marysville
Mill Creek
Monroe
Mountlake Terrace
Mukilteo
Snohomish
Stanwood

commtrans.org
425-353-RIDE (7433)

WASHINGTON STATE FERRIES

Washington State Ferries (WSF) is the largest ferry system in the United States, serving eight counties within Washington and the Province of British Columbia in Canada.

www.wsdot.wa.gov/ferreries
206-464-6400 or 1-888-808-7977

KING COUNTY WATER TAXI

The King County Water Taxi is a water taxi service operated by King County Department of Transportation's Marine Division. It operates two routes: the Vashon Island/Downtown Seattle route and the West Seattle/Downtown Seattle route.

metro.kingcounty.gov/tops/watertaxi
206-553-3000

SEATTLE MONORAIL

Seattle Center Monorail provides a fun, quick, and convenient link between Downtown Seattle and Seattle Center, with departures approximately every 10 minutes.

AMTRAK

From King Street Station, Amtrak goes all over the nation, and Amtrak Cascades has multiple daily trips to destinations in Washington and Oregon.

amtrak.com
1-800-USA-RAIL (1-800-872-7245)

COMMUTE TRIP REDUCTION

The City of Seattle's Commute Trip Reduction (CTR) program is a partnership that connects employers with resources to provide high-quality transportation options to their employees.

VISION ZERO

Seattle is consistently recognized as one of the safest cities in the country. Over the past decade, we've seen a 30 percent decline in traffic fatalities, even as our population grows.

Despite this fact, traffic collisions are a leading cause of death for Seattle residents age 5-24. Older adults are disproportionately affected and, as our population ages, this trend could grow.

We can do better.

Vision Zero is our plan to end traffic deaths and serious injuries by 2030.

Death and injury on our streets is preventable. For the most part, these aren't "accidents." Collisions are often the result of poor behaviors and unforgiving roadway designs.

Find the plan at seattle.gov/visionzero and learn about the actions we're taking to get to zero.



ORCA CARD

The ORCA card is all you need to pay your fare on buses and trains in the Puget Sound region. ORCA works on the Streetcar, Community Transit, Everett Transit, King County Metro, Kitsap Transit, Pierce Transit, Sound Transit, and Washington State Ferries.

- Load E-purse (electronic purse) value (adding \$5-\$300 to pay for trips as you go, and reload when the balance is low)
Load a monthly pass

ORCA for Business

ORCA business accounts help employers provide transit pass benefits to their employees. Business accounts offer the flexibility of monthly and annual product options, allowing the employer to choose the right program fit for them.

ORCA LIFT

ORCA LIFT is a new, reduced-fare transit option. With the ORCA LIFT card, income-qualified riders save up to 50% or more on King County Metro, Sound Transit Link light rail, and Seattle Streetcar.



BIKES AND STREETCAR

Bikes are allowed, space permitting, in the center section of the streetcars. Please use the bike racks, located in the center section of the First Hill streetcars and new South Lake Union streetcar.

BIKE PARKING

Find parking for your bicycle at seattle.gov/transportation/bikeparking.htm

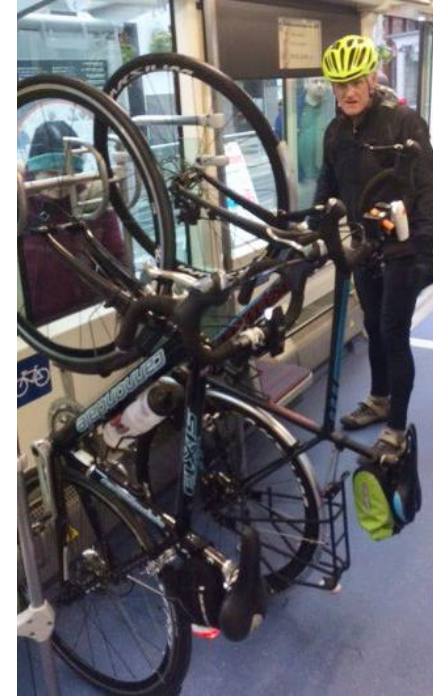
PRONTO CYCLE SHARE

Pronto is Seattle's cycle sharing system featuring 500 bikes at 50 stations located throughout Seattle, many of which are close to Streetcar stops.

Combining use of the streetcar with a no-hassle cycle-share service will greatly extend the range you can come and go within the city.

You must be 16 years or older to ride Pronto. If you are under 18, parent or guardian consent is required. Annual memberships are available, as are 24-hour and 3-day passes.

prontocycleshare.com
800-6-PRONTO (800-677-6686)



FUTURE STREETCAR EXPANSION

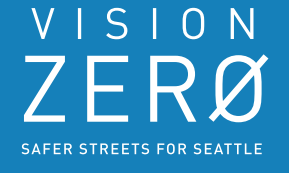
When the Seattle Streetcar system is complete, we will connect you to even more places.



CENTER CITY CONNECTOR

The Center City Connector will provide a critical link between the South Lake Union and First Hill lines.

Looking out for your safety



RIDING THE STREETCAR

- Do not run across the street or tracks to catch a streetcar
Always cross the street at marked crosswalks or intersections
Stay clear of the platform edge, marked in yellow, when the streetcar arrives and departs.
Let people get off the streetcar first before you get on
Use hand rails if you are standing on the streetcar.
Do not use the doors when the door-closing tone is sounding

GENERAL

- Streetcars are very quiet
Streetcars sound warning bells and horns when necessary
There are no fences or barriers separating streetcars from cars, bikes, or pedestrians
Streetcars cannot swerve to avoid obstacles - they run on tracks
Streetcars sometimes have their own traffic signals and can cross the street when other vehicles cannot

PEOPLE WALKING

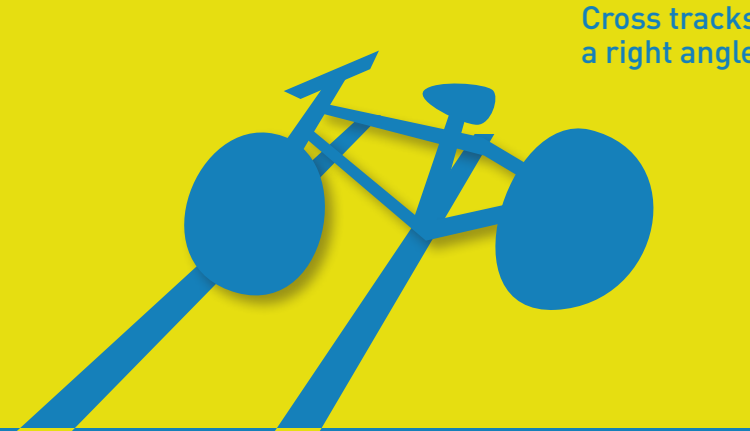
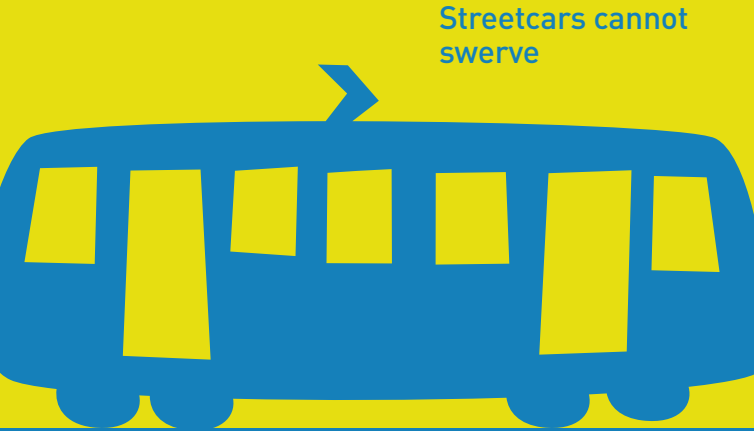
- Cross streetcar tracks at marked crosswalks or intersections
Always look both ways when crossing streetcar tracks
When crossing tracks with wheelchairs, walkers, and strollers, cross at a right angle to avoid getting wheels stuck in the track groove
Remove headphones and put down phones so you can hear streetcar warning bells and horns

PEOPLE BIKING

- Cross streetcar tracks at a right angle to avoid falling.
Don't ride on top of the rails! Your wheels may get stuck in the track groove.
Use bike lanes and marked bike crossings, where available.
Consider walking your bike across streetcar tracks when they are wet or icy, as tracks can be slippery
Don't enter lanes reserved exclusively for streetcars.
Use clear hand signals so that streetcars and other drivers are aware of your intentions

PEOPLE DRIVING

- Be prepared to stop behind streetcars.
Never stop, idle, or park your vehicle in the streetcar's path or in protected bike lanes
Be careful when tracks are wet or icy - they could be slippery
Look out for pedestrians running to catch a streetcar or getting off a streetcar and crossing the road
If you have a fender bender over a streetcar track, clear the track, move into a parking lane or other protected place, if it is safe to do so
Before opening your car door, check to see if a streetcar is coming
Don't place items in the streetcar's path when loading and unloading



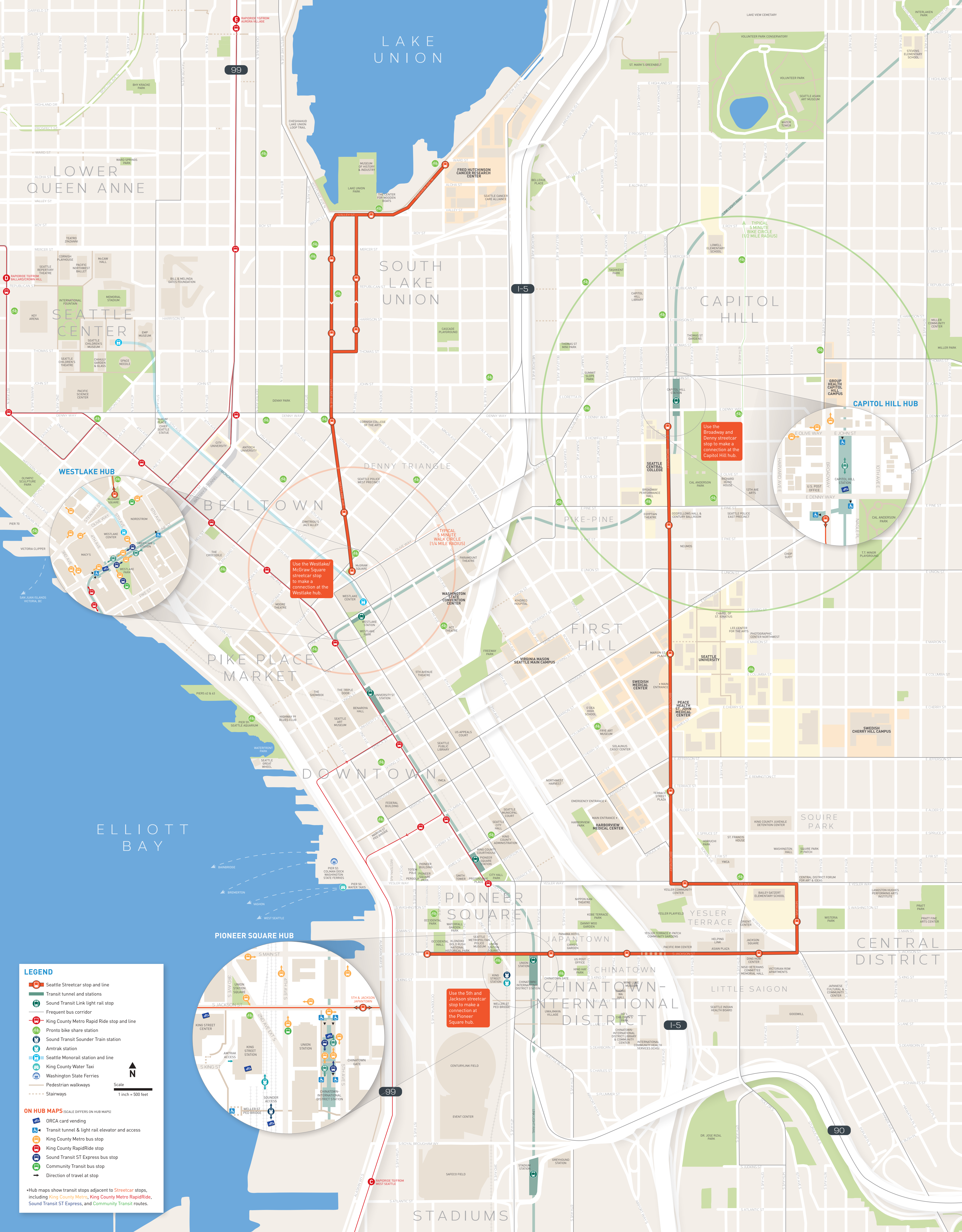
SEATTLE STREETCAR MAP - Connect with us. Includes icons for accessibility, fare, and service info.

ABOUT THIS MAP. The Seattle Streetcar connects to several modes of transportation... HOW MUCH DOES THE STREETCAR COST? Adults: \$2.25...

HOW TO PAY. Pay your fare by tapping your ORCA card or by using a credit card or coins at ticket machines...

SOUND TRANSIT LINK LIGHT RAIL. Link light rail travels between Westlake Station in Downtown Seattle and Sea-Tac Airport, making 11 stops...

SOUND TRANSIT SOUNDER TRAIN. The Sound Transit Sounder Train (Sounder) travels between Lakewood and Seattle and between Everett and Seattle...



LOWER QUEEN ANNE

LAKE UNION

SOUTH LAKE UNION

CAPITOL HILL

WESTLAKE HUB

BELLTOWN

PIKE PLACE MARKET

DOWNTOWN

PIONEER SQUARE HUB

PIONEER SQUARE

CHINATOWN-INTERNATIONAL DISTRICT

CENTRAL DISTRICT

STADIUMS

**LEGEND**

- Seattle Streetcar stop and line
- Transit tunnel and stations
- Sound Transit Link light rail stop
- Frequent bus corridor
- King County Metro Rapid Ride stop and line
- Pronto bike share station
- Sound Transit Sounder Train station
- Amtrak station
- Seattle Monorail station and line
- King County Water Taxi
- Washington State Ferries
- Pedestrian walkways
- Stairways

Scale 1 inch = 500 feet

**ON HUB MAPS** (SCALE DIFFERS ON HUB MAPS)

- ORCA card vending
- Transit tunnel & light rail elevator and access
- King County Metro bus stop
- King County RapidRide stop
- Sound Transit ST Express bus stop
- Community Transit bus stop
- Direction of travel at stop

• Hub maps show transit stops adjacent to Streetcar stops, including King County Metro, King County Metro RapidRide, Sound Transit ST Express, and Community Transit routes.

Use the Westlake/McGraw Square streetcar stop to make a connection at the Westlake hub.

Use the Broadway and Denny streetcar stop to make a connection at the Capitol Hill hub.

Use the 5th and Jackson streetcar stop to make a connection at the Pioneer Square hub.

**CAPITOL HILL HUB**

**PIONEER SQUARE HUB**

**WESTLAKE HUB**

TYPICAL 5 MINUTE WALK CIRCLE (1/4 MILE RADIUS)

TYPICAL 5 MINUTE BIKE CIRCLE (1/2 MILE RADIUS)